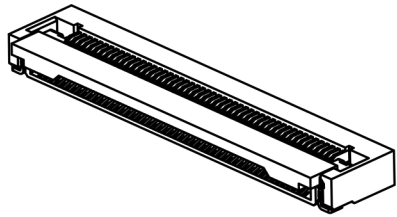
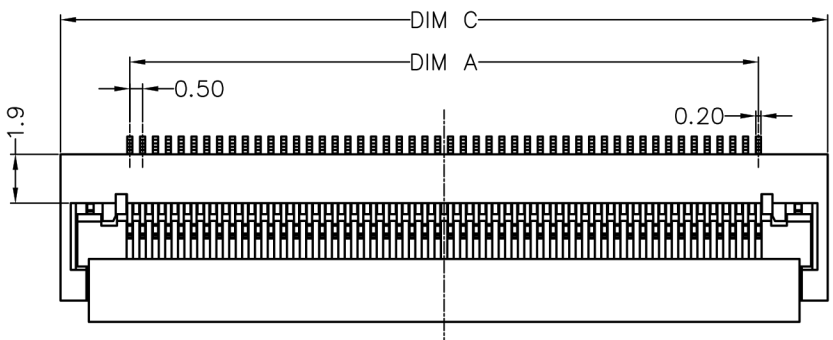
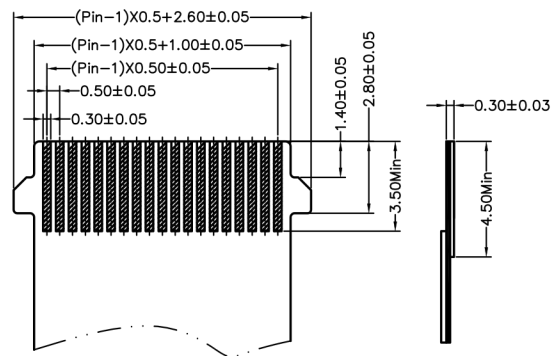
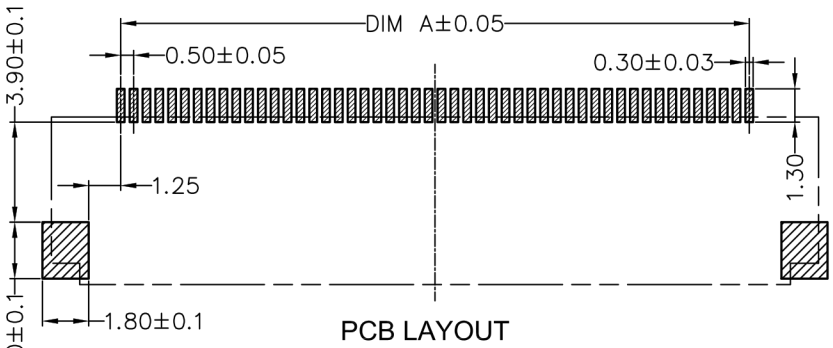
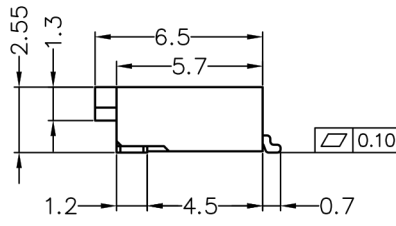
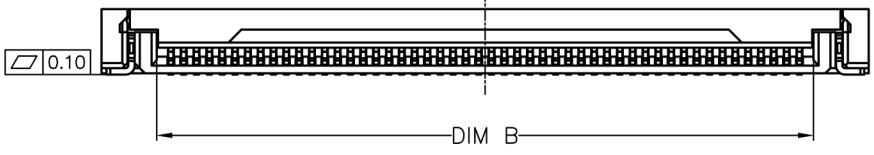


CUSTOMER

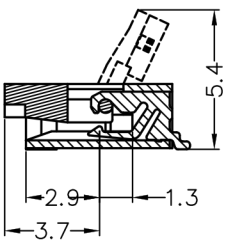
REV. 版本	MODIFICATION. 变更内容	DRAWN/DATE 设计/日期
A0	首次发行	2015.06.06



备注:
 端子材质: 磷青铜, 镀金
 接地片材质: 磷青铜, 镀锡
 塑胶材质: 锁扣: LCP, UL94V-0, 黑色
 主体: LCP, UL94V-0, 本色
 额定电流: 0.5A DC
 额定电压: 50V DC
 温度范围: -40° C ~ +85° C
 接触阻抗: 初始值30mΩ max.
 环境测试后: 40mΩ max.
 绝缘阻抗: 500MΩ min.
 耐电压: AC 150V/rms
 *RoHS产品.



No. of Contacts	A	B	C	No. of Contacts	A	B	C
4	1.50	2.57	6.90	33	16.00	17.07	21.40
5	2.00	3.07	7.40	34	16.50	17.57	21.90
6	2.50	3.57	7.90	35	17.00	18.07	22.40
7	3.00	4.07	8.40	36	17.50	18.57	22.90
8	3.50	4.57	8.90	37	18.00	19.07	23.40
9	4.00	5.07	9.40	38	18.50	19.57	23.90
10	4.50	5.57	9.90	39	19.00	20.07	24.40
11	5.00	6.07	10.40	40	19.50	20.57	24.90
12	5.50	6.57	10.90	41	20.00	21.07	25.40
13	6.00	7.07	11.40	42	20.50	21.57	25.90
14	6.50	7.57	11.90	43	21.00	22.07	26.40
15	7.00	8.07	12.40	44	21.50	22.57	26.90
16	7.50	8.57	12.90	45	22.00	23.07	27.40
17	8.00	9.07	13.40	46	22.50	23.57	27.90
18	8.50	9.57	13.90	47	23.00	24.07	28.40
19	9.00	10.07	14.40	48	23.50	24.57	28.90
20	9.50	10.57	14.90	49	24.00	25.07	29.40
21	10.00	11.07	15.40	50	24.50	25.57	29.90
22	10.50	11.57	15.90	51	25.00	26.07	30.40
23	11.00	12.07	16.40	52	25.50	26.57	30.90
24	11.50	12.57	16.90	53	26.00	27.07	31.40
25	12.00	13.07	17.40	54	26.50	27.57	31.90
26	12.50	13.57	17.90	55	27.00	28.07	32.40
27	13.00	14.07	18.40	56	27.50	28.57	32.90
28	13.50	14.57	18.90	57	28.00	29.07	33.40
29	14.00	15.07	19.40	58	28.50	29.57	33.90
30	14.50	15.57	19.90	59	29.00	30.07	34.40
31	15.00	16.07	20.40	60	29.50	30.57	34.90
32	15.50	16.57	20.90				



1034A0-***-3P1
 PIN数
 1: LCP 2: PA9T
 P: 盘装 G: 管装
 1: 雾锡 2: 亮锡 3: 镀金

GENERAL TOLERANCE	ANGLE TOLERANCE	DESIGN. 设计 唐华民 2015.06.06
X. ±0.30 .X ±0.25 .XX ±0.15 .XXX ±0.10	X° ±5.0° .X° ±3.0° .XX° ±2.0°	CHECKED. 审核
UNIT:mm	SCALE 1:1	APPROVED. 核准
A4	SHEET:1of1	

深圳市宏利电子有限公司	
FILE NAME. 品名	0.5Pitch 2.5H ZIF 车载翻盖SMT
PART NUMBER. 料号	1034A0-***-3P1
MDRAWING NO. 图号	1034A0
	REV. A0