

Electrical

Voltage:1400 V AC(rms)/DC

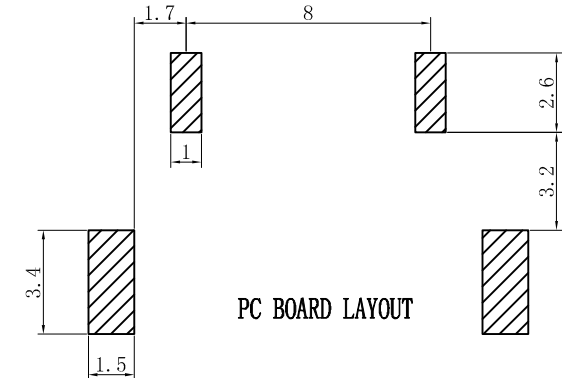
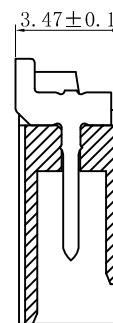
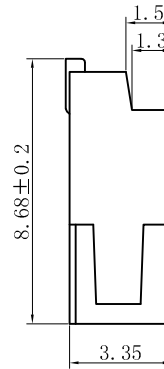
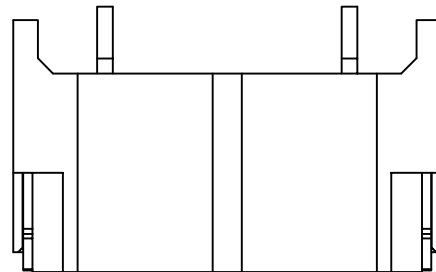
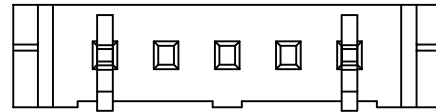
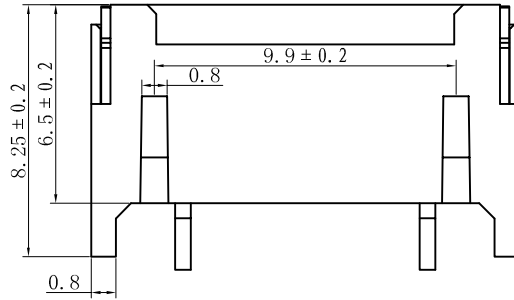
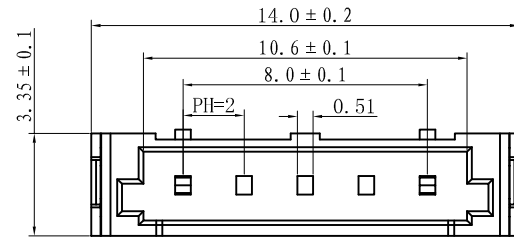
Current:1 A AC(rms)/DC

Contact Resistance:10 mΩ max

Dielectric Withstanding Voltage:3800 V AC/rms

Insulation Resistance:1000 MΩ min

Operating Temp:-25° C~+85° C



一般公差 TOLERANCES X. ±0.40 .XX ±0.20 .X ±0.30 .XXX ±0.10 ANGLES ±2°		深圳市宏利电子有限公司 Shenzhen Holy Electronic Co.,Ltd	
检验尺寸标示 SYMBOLS INDICATE CLASSIFICATION DIMENSION MARK IS CRITICAL DIM. MARK IS MAJOR DIM.	工程 图号 BHS40GY-2P	制图 (DR) '08/5/16 审核 (CHKD) 核准 (APPD) Rigo Lu	
表面处理 (FINISH)	比例 (SCALE) 1:1	单位 (UNITS) mm	张数 (SHEET) 1 OF 1 尺寸 (SIZE) A4 版本 (REV) 0

修订 REV	修改摘要 REVISION DESCRIPTION	日期 DATE	签名 SIGNATURE
-	-	-	-